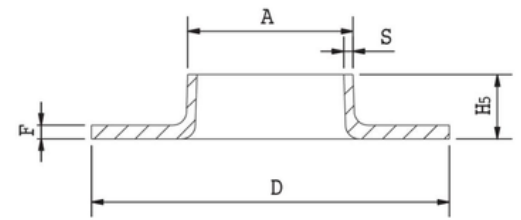


ISO STAINLESS STEEL PRESSED COLLAR

ISO stainless steel pressed collars for Pressure Purposes are produced in accordance with EN 1092-1 / Type 37.

Dimensions and Tolerance of the ISO stainless steel pressed collars Special Metric Materials sources and supplies are in accordance with ISO 1127, Plain Ends (PE). We also stock a full range of ISO stainless steel backing flanges to complement our range of pressed collars.

Special Metric Materials can supply ISO stainless steel pressed collars in the following Grades: 304L (1.4307), 316L (1.4404) & 316L High Moly (1.4432).



	A	D	F	S	Sp	H5	Kg
ISO							
Coll 21,3x2,5/2 PN16 37 EN1092-1	21,3	45	2,5	2		7	0,03
Coll 26,9x3/2 PN16 37 EN1092-1	26,9	58	3	2		8	0,06
Coll 33,7x3/2 PN16 37 EN1092-1	33,7	68	3	2		10	0,08
Coll 42,4x3/2 PN16 37 EN1092-1	42,4	78	3	2		12	0,10
Coll 48,3x3/2 PN16 37 EN1092-1	48,3	88	3	2		15	0,13
Coll 60,3x3/2 PN16 37 EN1092-1	60,3	102	3	2		20	0,18
Coll 76,1x3/2 PN16 37 EN1092-1	76,1	122	3	2		20	0,24
Coll 88,9x3/2 PN16 37 EN1092-1	88,9	138	3	2		25	0,31
Coll 114,3x3	114,3	158	3	3		25	0,37
Coll 139,7x3	139,7	188	3	3		25	0,48
Coll 168,3x3	168,3	212	3	3		25	0,54
Coll 219,1x4	219,1	268	4	4		30	1,10
Coll 273x4	273	320	4	4		30	1,34
Coll 323,9x4	323,9	370	4	4		30	1,58