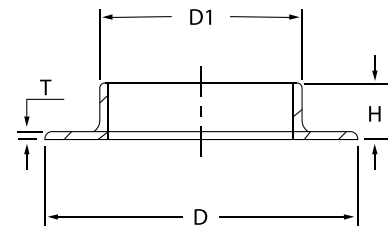


Tru-Bore® Angle Collar

A stainless steel Tru-Bore® angle collar is a pipe fitting that has a tapered hub with a short straight length and a flared end. The taper of the hub usually has an angle that does not exceed 7° on the outside surface.

The stainless steel Tru-Bore® angle collars that Special Metric Materials typically supplies are manufactured to EN 10253-4/EN 10253-3. Tru-Bore® angle collars manufactured to EN 10253-4 have a weld factor of z=1 & are rated to a higher pressure capability.



Dimensions and Tolerance of the Tru-Bore® angle collar Special Metric Materials sources and supplies are in accordance with ISO 1127, Plain Ends (PE).

Special Metric Materials can supply Tru-Bore® angle collar in the following Grades: 304L (1.4307), 316L (1.4404) & 316L High Moly (1.4432).

Tru-Bore® is a registered trademark of OSTP.

DN	D1	T	D	H	Weight kg/pce
200	208	4	260	30	1,1
250	258	4	310	30	1,4
300	308	4	360	30	1,7
350	358	4	430	40	2,8
400	408	4	480	40	3,2
450	458	4	530	40	3,3
500	508	4	580	40	4
500	510	5	585	50	5,7
600	608	4	680	40	4,8
600	610	5	685	50	7,2
700	710	5	800	50	8,7
700	712	6	800	60	12
800	810	5	900	50	9,9
800	812	6	905	60	13,8
900	910	5	1000	50	11,2
900	912	6	1005	60	15,5
1000	1010	5	1100	50	14,5
1000	1012	6	1110	60	17,2