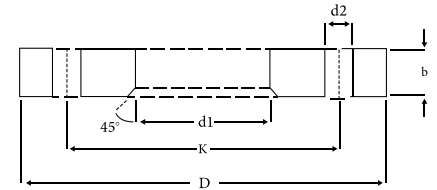


Tru-Bore® Backing Flanges

Special Metric Materials can supply Tru-Bore® backing flanges in a variety of different coatings available from stock:

- Bright zinc plated (BZP)
- Fusion bonded epoxy (FBE)
- Plascoat PPA 571 ES (PPA)
- Hot dipped galvanised (HDG)
- Stainless grade 316L & 304L



Special Metric Materials can supply Tru-Bore® backing flanges in the following drillings:

- PN16 reduced thickness
- PN16 full thickness EN1092-1
- PN10 reduced thickness 200-600 ml.
- ASA 150 & PN25
- Table D/E

Tru-Bore® is a registered trademark of OSTP.

Size Dn	Drilling	OD	No. Holes	Holes Dia	P.C.D	Full Thick	Red Thick	45° Chmafer	Weight
1/2" 15mm	PN 10	95	4	14	65	N/A	10	3	0.5
	PN 16	95	4	14	65	14	10	3	0.5
	ASA 150	90	4	15.7	60.5	N/A	10	3	0.5
3/4" 20mm	PN 10	105	4	14	75	N/A	10	3	0.61
	PN 16	105	4	14	75	16	10	3	0.61
	ASA 150	100	4	15.7	69.8	N/A	10	3	0.6
1" 25mm	PN 10	115	4	14	85	N/A	10	3	0.73
	PN 16	115	4	14	85	16	10	3	0.73
	ASA 150	110	4	15.7	79.2	N/A	10	3	0.7
1.1/4" 32mm	PN 10	140	4	18	100	N/A	10	3	1.07
	PN 16	140	4	18	100	18	10	3	1.07
	ASA 150	115	4	15.7	88.9	N/A	10	3	0.92
1.1/2" 40mm	PN 10	150	4	18	110	N/A	10	3	1.21
	PN 16	150	4	18	110	18	10	3	1.21
	ASA 150	125	4	15.7	98.6	N/A	10	3	1.06
2" 50mm	PN 10	165	4	18	125	N/A	10	3	1.45
	PN 16	165	4	18	125	20	10	3	1.45
	ASA 150	150	4	19.1	120.7	N/A	10	3	1.33
2.1/2" 65mm	PN 10	185	4	18	145	N/A	10	3	1.78
	PN 16	185	4	18	145	20	10	3	1.78
	ASA 150	180	4	19.1	139.7	N/A	10	3	1.75
3" 80mm	PN 10	200	8	18	160	N/A	10	3	1.9
	PN 16	200	8	18	160	20	10	3	1.9
	ASA 150	190	4	19.1	152.4	N/A	10	3	1.9
4" 100mm	PN 10	220	8	18	180	N/A	10	4	2.19
	PN 16	220	8	18	180	22	10	4	2.19
	ASA 150	230	8	19.1	190.5	N/A	10	4	2.3
5" 125mm	PN 10	250	8	18	210	N/A	12	4	3.23
	PN 16	250	8	18	210	22	12	4	3.23
	ASA 150	255	8	22.4	215.9	N/A	12	4	3.3
6" 150mm	PN 10	285	8	22	240	N/A	12	5	4.01
	PN 16	285	8	22	240	24	12	5	4.01
	ASA 150	280	8	22.4	241.3	N/A	12	5	3.98

Tru-Bore® Backing Flanges

Size Dn	Drilling	OD	No. Holes	Holes Dia	P.C.D	Full Thick	Red Thick	45° Chmafer	Weight
8" 200mm	PN 10	340	8	22	295	N/A	12	6	5.05
	PN 16	340	12	22	295	26	12	6	5.05
	ASA 150	345	8	22.4	298.5	N/A	12	6	5.2
10" 250mm	PN 10	395	12	22	350	N/A	16	6	9.07
	PN 16	405	12	26	355	29	16	6	9.07
	ASA 150	405	12	25.4	362	N/A	16	6	9.07
12" 300mm	PN 10	445	12	22	400	N/A	19	6	12.6
	PN 16	460	12	26	410	32	19	6	13.03
	ASA 150	485	12	25.4	431.8	N/A	19	6	13.65
14" 350mm	PN 10	505	16	22	460	N/A	22	8	17.64
	PN 16	520	16	26	470	35	22	8	18.16
	ASA 150	535	12	28.4	476.3	N/A	22	8	19.61
16" 400mm	PN 10	565	16	26	515	N/A	22	8	20.5
	PN 16	580	16	30	525	38	22	8	21.05
	ASA 150	595	16	28.4	539.8	N/A	22	8	21.63
18" 450mm	PN 10	615	20	26	565	N/A	25	8	26.62
	PN 16	640	20	30	585	42	25	8	27.71
	ASA 150	635	16	31.8	577.9	N/A	25	8	27.42
20" 500mm	PN 10	670	20	26	620	N/A	28	8	33.35
	PN 16	715	20	33	650	46	28	8	35.6
	ASA 150	700	20	31.8	635	N/A	28	8	34.8
24" 600mm	PN 10	780	20	30	725	N/A	32	8	44.6
	PN 16	840	20	36	770	55	32	8	48.04
	ASA 150	815	20	35.1	749.3	N/A	32	8	46.49
28" 700mm	PN 10	895	24	30	840	N/A	35	8	49.5
	PN 16	910	24	36	840	63	35	8	53.35
32" 800mm	PN 10	1015	24	33	950	N/A	44	8	72.45
	PN 16	1025	24	39	950	74	44	8	75.52
36" 900mm	PN 10	1115	28	33	1050	N/A	48	8	91.4
	PN 16	1125	28	39	1050	82	48	8	95.4



**Special Metric
Materials**

Special Metric Materials Ltd, Broadway, Globe Industrial Estate,
Dukinfield, Cheshire, SK16 4UU, United Kingdom

+44 (0)161 343 7005

sales@specialmetricmaterials.com

Special Metric Materials Ltd is a company registered in England and Wales.
Company Number 13650650.