

# Tru-Bore® End Caps

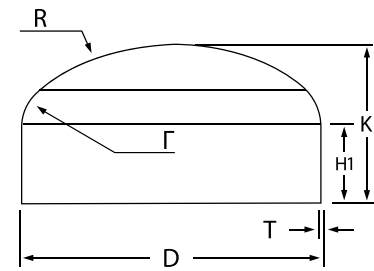
Tru-Bore® end caps are typically used for protecting the end of a tube, piping system or other fitting. The shape is designed to fit to the pipe it is fitted to, and it can be produced in many different sizes.

The stainless steel Tru-Bore® end caps that Special Metric Materials typically supplies are manufactured to EN 10253-4/EN 10253-3. Tru-Bore® end caps manufactured to EN 10253-4 have a weld factor of z=1 & are rated to a higher pressure capability.

Dimensions and Tolerance of our Tru-Bore® end caps are in accordance with ISO 1127, Plain Ends (PE).

Special Metric Materials can supply Tru-Bore® end caps in the following Grades: 304L (1.4307), 316L (1.4404) & 316L High Moly (1.4432).

*Tru-Bore® is a registered trademark of OSTP.*



D	T	R	r	K	H1	Volume Litres	Weight kg/pce
54	2	40	8	25	10	0.02	0.1
84	2	64	13	38	15	0.1	0.2
86	3	64	13	38	15	0.1	0.30*
104	2	80	16	44	15	0.1	0.3
106	3	80	16	44	15	0.1	0.40*
129	2	100	20	50	15	0.3	0.4
131	3	100	20	50	15	0.3	0.60*
154	2	120	24	56	15	0.5	0.5
156	3	120	24	56	15	0.5	0.80*
204	2	160	32	74	20	1	0.9
206	3	160	32	74	20	1	1.3
208	4	160	32	74	20	1	1.70*
254	2	200	40	86	20	2	1.30*
256	3	200	40	86	20	2	2
258	4	200	40	86	20	2	2.60*
306	3	240	48	100	20	3.5	2.7
308	4	240	48	100	20	3.5	3.60*
356	3	280	56	115	20	5.6	3.7
358	4	280	56	115	20	5.6	4.90*
406	3	320	65	128	20	8.7	4.7
408	4	320	65	128	20	8.7	6.30*
456	3	360	72	140	20	14	6.3
458	4	360	72	140	20	14	7.80*
506	3	400	80	152	20	19	7.20*
508	4	400	80	152	20	19	9.60*
606	3	480	96	180	20	30	12.7*