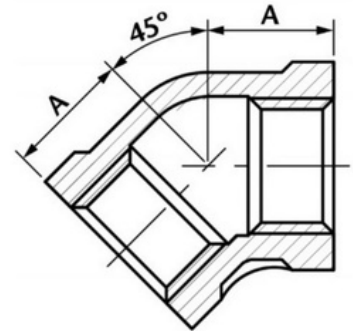


BSP 45° Elbow

A 45° Elbow is used to connect two equally sized metric pipes and change the direction of the flow. This 45° Elbow BSP fitting is suitable for use with natural gas, LPG, hot and cold water, as well as many other applications.

- Made from CF8M (316) Stainless Steel material and conforms to ISO 4144 standard.
- Sizes range from 1/8" – 4".
- Threads are to ISO 7-1 (DIN2999) BSPP Female, BSPT Male.



DN	A	Kgs
1/8"	17	0.02
1/4"	17	0.025
3/8"	20	0.038
1/2"	22	0.068
3/4"	25	0.096
1"	30	0.164
1 1/4"	33.5	0.236
1 1/2"	37.5	0.312
2"	43.5	0.468
2 1/2"	49.5	0.775
3"	54	1.14
4"	64	1.867