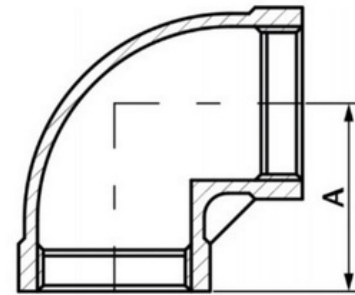


BSP 90° Elbow

SA 90° Elbow is used to connect two equally sized metric pipes and change the direction of the flow. This 90° Elbow BSP fitting is suitable for use with natural gas, LPG, hot and cold water, as well as many other applications.

- Made from CF8M (316) Stainless Steel material and conforms to ISO 4144 standard.
- Sizes range from 1/8" – 4".
- Threads are to ISO 7-1 (DIN2999) BSPP Female, BSPT Male.



| DN | A | Kgs |
|--------|------|-------|
| 1/8" | 17 | 0.02 |
| 1/4" | 19 | 0.026 |
| 3/8" | 23 | 0.044 |
| 1/2" | 27 | 0.07 |
| 3/4" | 32.3 | 0.108 |
| 1" | 38.3 | 0.185 |
| 1 1/4" | 45 | 0.285 |
| 1 1/2" | 48 | 0.397 |
| 2" | 57 | 0.522 |
| 2 1/2" | 69.1 | 0.979 |
| 3" | 78.2 | 1.366 |
| 4" | 96 | 2.431 |