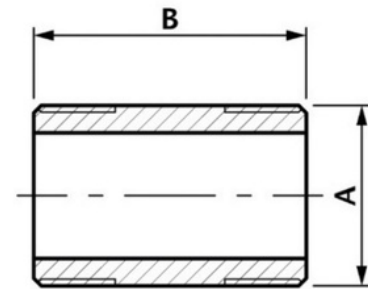


BSP Barrel Nipple

A Barrel Nipple is a fitting that consists of a short piece of pipe, typically with a male pipe thread at each end so it can be used for connecting two other fittings. This Barrel Nipple BSP Fitting is suitable for use in natural gas, LPG, hot and cold water, as well as many other applications.

- Made from CF8M (316) Stainless Steel material and conforms to ISO 4144 standard.
- Sizes range from 1/8" – 4".
- Threads are to ISO 7-1 (DIN2999) BSPP Female, BSPT Male.



DN	A	B	Kgs
1/8"	10.2	30	0.009
1/4"	13.5	30	0.012
3/8"	17.2	40	0.024
1/2"	21.3	60	0.063
3/4"	26.9	60	0.083
1"	33.7	60	0.12
1 1/4"	42.4	80	0.211
1 1/2"	48.3	80	0.256
2"	60.3	100	0.44
2 1/2"	76.1	100	0.69
3"	88.9	120	1.16
4"	114.3	120	1.477