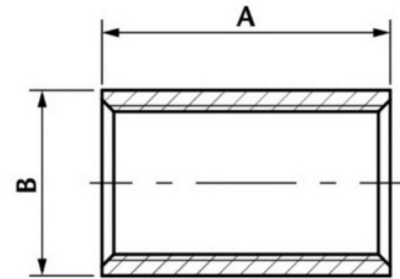


## BSP Full Socket

A Full Socket is a fitting that goes over the end of a pipe and sockets can be used to join two pieces of pipe of equal diameter in a piping system. Both ends have a threaded connection. This Full Socket BSP Fitting is suitable for use in natural gas, LPG, hot and cold water, as well as many other applications.

- Made from CF8M (316) Stainless Steel material and conforms to ISO 4144 standard.
- Sizes range from 1/8" – 4".
- Threads are to ISO 7-1 (DIN2999) BSPP Female, BSPT Male.



DN	A	B	Kgs
1/8"	17	13.5	0.009
1/4"	24	16.7	0.021
3/8"	25	20.4	0.029
1/2"	32	24.9	0.045
3/4"	35	30	0.057
1"	41	37.8	0.101
1 1/4"	46.8	47	0.175
1 1/2"	46.8	53	0.193
2"	54.5	65.7	0.331
2 1/2"	63	82	0.505
3"	69	95.8	0.722
4"	81	121.5	1.061