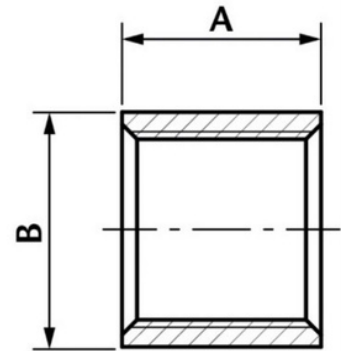


BSP Half Socket

A socket is a fitting that goes over the end of a pipe. A Half Socket is only threaded at one end, and the other end is a welded type. This Half Socket BSP Fitting is suitable for use in natural gas, LPG, hot and cold water, as well as many other applications.

- Made from CF8M (316) Stainless Steel material and conforms to ISO 4144 standard.
- Sizes range from 1/8" – 4".
- Threads are to ISO 7-1 (DIN2999) BSPP Female, BSPT Male.



DN	A	B	Kgs
1/8"	9	13.5	0.005
1/4"	13	16.7	0.011
3/8"	13	20.4	0.014
1/2"	16	24.9	0.022
3/4"	18	30	0.036
1"	21	37.8	0.052
1 1/4"	23.5	47	0.086
1 1/2"	23.5	53	0.098
2"	27.5	65.7	0.152
2 1/2"	31.5	82	0.25
3"	34.5	95.8	0.367
4"	40.5	121.5	0.533