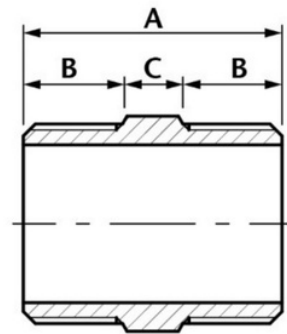


BSP Hexagon Nipple

A Hexagon Nipple is similar to Barrel Nipples and Weld Nipples in that it is a fitting that consists of a short piece of pipe, typically with a male pipe thread at each end so it can be used for connecting two other fittings. A Hexagon Nipple has the added feature of a hexagonal section in the centre for a wrench to grasp. This Hexagon Nipple BSP Fitting is suitable for use in natural gas, LPG, hot and cold water, as well as many other applications.

- Made from CF8M (316) Stainless Steel material and conforms to ISO 4144 standard.
- Sizes range from 1/8" – 4".
- Threads are to ISO 7-1 (DIN2999) BSPP Female, BSPT Male.



DN	A	B	C	Kgs
1/8"	30.3	12	6.3	0.016
1/4"	32	13.4	5.2	0.021
3/8"	36.7	14.8	7.1	0.035
1/2"	41.7	16.4	8.8	0.05
3/4"	45	18.5	8	0.07
1"	48.1	18.6	10.9	0.119
1 1/4"	53.4	20.6	12.2	0.18
1 1/2"	55.5	21.5	12.5	0.217
2"	64.2	25.6	13	0.328
2 1/2"	76	30.8	14.4	0.661
3"	79.7	33.3	13.1	0.855
4"	85.7	36	13.7	1.327