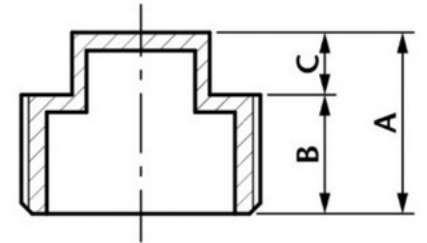


BSP Square Head Plug

Square Head Plugs are used as a cost-effective way of plugging off Female threaded ends. Square Head Plugs feature a Male pipe thread on one end and a closed off Square Head Plug at the other end. The square head nut allows for easy tightening and loosening. This Square Head Plug BSP Fitting is suitable for use in natural gas, LPG, hot and cold water, as well as many other applications.



- Made from CF8M (316) Stainless Steel material and conforms to ISO 4144 standard.
- Sizes range from 1/8" – 4".
- Threads are to ISO 7-1 (DIN2999) BSPP Female, BSPT Male.

DN	A	B	C	Kgs
1/8"	11	6.7	4.3	0.005
1/4"	16	9.6	6.4	0.009
3/8"	16	9.8	6.2	0.012
1/2"	22.6	13.6	9	0.03
3/4"	25	15	10	0.039
1"	26	15	11	0.056
1 1/4"	29	18	11	0.089
1 1/2"	30	18	12	0.112
2"	35	22	13	0.17
2 1/2"	40	25	15	0.347
3"	42	27	15	0.424
4"	52	33	19	0.899