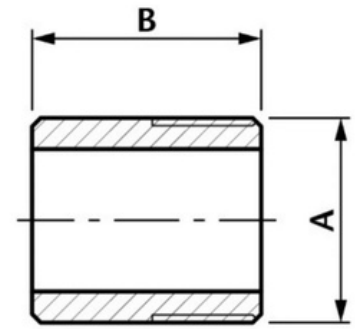


BSP Weld Nipple

A Weld Nipple can be fixed to a pipe or fitting as part of a larger piping system and can be welded on one end. This Weld Nipple BSP Fitting is suitable for use in natural gas, LPG, hot and cold water, as well as many other applications.

- Made from CF8M (316) Stainless Steel material and conforms to ISO 4144 standard.
- Sizes range from 1/8" – 4".
- Threads are to ISO 7-1 (DIN2999) BSPP Female, BSPT Male.



DN	A	B	Kgs
1/8"	10.2	30	0.01
1/4"	13.5	30	0.016
3/8"	17.2	30	0.02
1/2"	21.3	35	0.037
3/4"	26.9	40	0.057
1"	33.7	40	0.085
1 1/4"	42.4	50	0.118
1 1/2"	48.3	50	0.164
2"	60.3	50	0.0216
2 1/2"	76.1	60	0.422
3"	88.9	70	0.64
4"	114.3	80	1.033