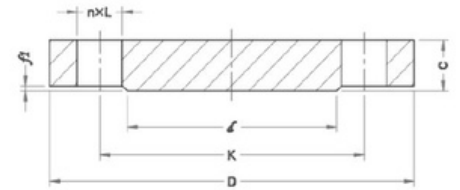


ANSI BLIND FLANGES

Special Metric Materials stocks ANSI blind flanges. ANSI blind flanges are solid discs that are used to block off a section of pipe or a nozzle in the pipeline that is not needed. They typically have mounting holes around the edge to attach them to the pipeline. They can be used on a permanent or temporary basis.



Special Metric Materials stocks ANSI blind flanges in accordance with EN1092-1.

ANSI blind flanges are available in a range of sizes, including custom fittings that can be manufactured to order.

Special Metric Materials has ANSI blind flanges readily available in stainless steel 304 and 316. Both welded and seamless fittings are available.

DN	Outside Diameter D	Diameter of Bolt Circle, K	Diameter of Bolt Hole, L	No of Bolt	Size of Bolt	Flange Thickness, C	Diameter of Raised Face, d	Height of Raised Face, f1
PN16								
10	90	60	14	4	M12	16	40	2
15	95	65	14	4	M12	16	45	2
20	105	75	14	4	M12	18	58	2
25	115	85	14	4	M12	18	68	2
32	140	100	18	4	M16	18	78	2
40	150	110	18	4	M16	18	88	3
50	165	125	18	4	M16	18	102	3
65	185	145	18	8	M16	18	122	3
80	200	160	18	8	M16	20	138	3
100	220	180	18	8	M16	20	158	3
125	250	210	18	8	M16	22	188	3
150	285	240	22	8	M20	22	212	3
200	340	295	22	12	M20	24	268	3
250	405	355	26	12	M24	26	320	3
300	460	410	26	12	M24	28	378	4
350	520	470	26	16	M24	30	438	4
400	580	525	30	16	M27	32	490	4
450	640	585	30	20	M27	40	550	4
500	715	650	33	20	M30	44	610	4
600	840	770	36	20	M33	54	725	5
700	910	840	36	24	M33	58	795	5
800	1025	950	39	24	M36	62	900	5
900	1125	1050	39	28	M36	64	1000	5
1000	1255	1170	42	28	M39	68	1115	5
1200	1485	1390	48	32	M45	86	1330	5
1400	1685	1590	48	36	M45	94	1530	5
1600	1930	1820	56	40	M52	112	1750	5
1800	2130	2020	56	44	M52	121	1950	5
2000	2345	2230	62	48	M56	136	2150	5

ANSI BLIND FLANGES

DN	Outside Diameter D	Diameter of Bolt Circle, K	Diameter of Bolt Hole, L	No of Bolt	Size of Bolt	Flange Thickness, C	Diameter of Raised Face, d	Height of Raised Face, f1
----	--------------------	----------------------------	--------------------------	------------	--------------	---------------------	----------------------------	---------------------------

PN25

10	90	60	14	4	M12	16	40	2
15	95	65	14	4	M12	16	45	2
20	105	75	14	4	M12	18	58	2
25	115	85	14	4	M12	18	68	2
32	140	100	18	4	M16	18	78	2
40	150	110	18	4	M16	18	88	3
50	165	125	18	4	M16	20	102	3
65	185	145	18	8	M16	22	122	3
80	200	160	18	8	M16	24	138	3
100	235	190	22	8	M20	24	162	3
125	270	220	26	8	M24	26	188	3
150	300	250	26	8	M24	28	218	3
200	375	320	30	12	M27	36	285	3
250	450	385	33	12	M30	38	345	3
300	515	450	33	16	M30	42	410	4
350	580	510	36	16	M33	46	465	4
400	660	585	39	16	M36	50	535	4
450	685	610	39	20	M36	57	560	4
500	755	670	42	20	M39	57	615	4
600	890	795	48	20	M45	72	735	5

PN40

10	90	60	14	4	M12	16	40	2
15	95	65	14	4	M12	16	45	2
20	105	75	14	4	M12	18	58	2
25	115	85	14	4	M12	18	68	2
32	140	100	18	4	M16	18	78	2
40	150	110	18	4	M16	18	88	3
50	165	125	18	4	M16	20	102	3
65	185	145	18	8	M16	22	122	3
80	200	160	18	8	M16	24	138	3
100	235	190	22	8	M20	24	162	3
125	270	220	26	8	M24	26	188	3
150	300	250	26	8	M24	28	218	3
200	360	310	26	12	M24	30	278	3
250	435	370	30	12	M27	32	335	3
300	485	430	30	16	M27	34	395	4
350	555	490	33	16	M30	38	450	4
400	620	550	36	16	M33	40	505	4
450	670	600	36	20	M33	50	555	4
500	730	660	36	20	M33	51	615	4
600	845	770	39	20	M36	66	720	5



**Special Metric
Materials**

Special Metric Materials Ltd, Broadway, Globe Industrial Estate, Dukinfield, Cheshire, SK16 4UU, United Kingdom

+44 (0)161 343 7005

sales@specialmetricmaterials.com

Special Metric Materials Ltd is a company registered in England and Wales. Company Number 13650650.