

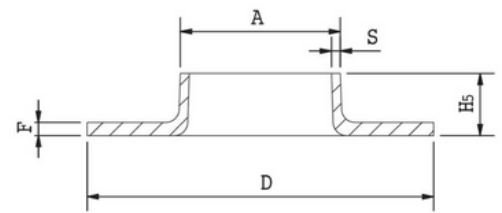
Tru-Bore® PRESSED COLLARS

A Tru-Bore® pressed collar for Pressure Purposes is produced in accordance with EN 1092-1 / Type 37.

Dimensions and Tolerance of the Tru-Bore® pressed collar Special Metric Materials sources and supplies are in accordance with ISO 1127, Plain Ends (PE).

Special Metric Materials can supply Tru-Bore® pressed collar in the following Grades: 304L (1.4307), 316L (1.4404) & 316L High Moly (1.4432).

Tru-Bore® is a registered trademark of OSTP.



	A	D	F	S	Sp	H5	Kg
Metric							
Coll 19 x2,5/2 PN16 37 EN 1092-1	19	45	2,5	2		9	0,03
Coll 24 x3/2 PN16 37 EN 1092-1	24	58	3	2		10	0,06
Coll 29 x3/2 PN16 37 EN 1092-1	29	68	3	2		12	0,08
Coll 38 x3/2 PN16 37 EN 1092-1	38	78	3	2		14	0,11
Coll 44 x3/2 PN16 37 EN 1092-1	44	88	3	2		17	0,14
Coll 54 x3/2 PN16 37 EN 1092-1	54	102	3	2		18	0,18
Coll 69 x3/2 PN16 37 EN 1092-1	69	122	3	2		20	0,25
Coll 84 x3/2 PN16 37 EN 1092-1	84	138	3	2		24	0,32
Coll 106 x4/3,2 PN10 37 EN 1092-1	106	158	4	3,2		27	0,53
Coll 133 x5/4 PN10 37 EN 1092-1	133	188	5	4	3,2	27	0,87
Coll 158 x5/4,5 PN10 37 EN 1092-1	158	212	5	4,5	3,2	27	1,01
Coll 210 x6/5 PN10 37 EN 1092-1	210	268	6	5	3,2	26	1,66



Tru-Bore® PRESSED COLLARS

	A	D	F	S	Sp	H5	Kg
--	---	---	---	---	----	----	----

3 and 4 mm

Coll 88,9x4	88,9	138	4	4		25	0,42
Coll 114,3x3	114,3	158	3	3		25	0,37
Coll 139,7x3	139,7	188	3	3		25	0,48
Coll 168,3x3	168,3	212	3	3		25	0,54
Coll 219,1x3	219,1	268	3	3		30	0,82
Coll 219,1x4	219,1	268	4	4		30	1,10
Coll 273x3	273	320	3	3		30	1,00
Coll 273x4	273	320	4	4		30	1,34
Coll 323,9x3	323,9	370	3	3		30	1,18
Coll 323,9x4	323,9	370	4	4		30	1,58
Coll 355,6x3	355,6	430	3	3		30	1,73
Coll 355,6x4	355,6	430	4	4		30	2,31
Coll 406,4x3	406,4	480	3	3		30	1,96
Coll 406,4x4	406,4	480	4	4		30	2,61
Coll 457,2x3	457,2	530	3	3		30	2,18
Coll 457,2x4	457,2	530	4	4		30	2,91
Coll 508x4	508	580	4	4		30	3,21
Coll 609,6x4	609,6	680	4	4		30	3,78

3 and 4 mm

Coll 86x4/3	86	138	4	3		24	0,42
Coll 104x3/2	104	158	3	2		27	0,41
Coll 129x3/2	129	188	3	2		27	0,53
Coll 131x4/3	131	188	4	3		27	0,70
Coll 154x3/2	154	212	3	2		27	0,62
Coll 156x4/3	156	212	4	3		27	0,82
Coll 204x3/2	204	268	3	2		26	0,87
Coll 206x4/3	206	268	4	3		26	1,14
Coll 256x3	256	320	3	3		30	1,14
Coll 258x4	258	320	4	4		30	1,50
Coll 306x3	306	370	3	3		30	1,36
Coll 308x4	308	370	4	4		30	1,73
Coll 356x3	356	430	3	3		30	1,73
Coll 358x4	358	430	4	4		30	2,28
Coll 406x3	406	480	3	3		30	1,97
Coll 408x4	408	480	4	4		30	2,59
Coll 458x4	458	530	4	4		30	2,90
Coll 508x4	508	580	4	4		30	3,21
Coll 608x4	608	680	4	4		30	3,83



**Special Metric
Materials**

Special Metric Materials Ltd, Broadway, Globe Industrial Estate,
Dukinfield, Cheshire, SK16 4UU, United Kingdom

+44 (0)161 343 7005

sales@specialmetricmaterials.com

Special Metric Materials Ltd is a company registered in England and Wales.
Company Number 13650650.