

# Hygienic RJT Unions

RJT Unions (Ring Joint Type) are very common in the UK hygienic industry and are usually seen as the 'standard' union. They are often used within pipework that needs to be regularly dismantled.

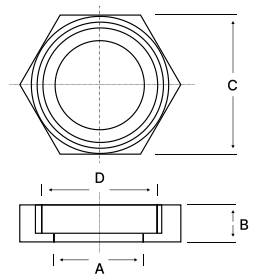
The RJT Unions we have in stock at Special Metric Materials are manufactured to BS 4825 part 5 and consist of a hexagon nut, a male part and a pressed weld liner. The 'O-Ring' seal can be available in a range of materials. The RJT Unions products we have in stock are below, with detailed data tables:

- RJT Hex Nuts
- RJT Weld Male
- RJT Weld Liners
- RJT Seal
- RJT Plain Blank

Product Code	Size	A	B	C	D
--------------	------	---	---	---	---

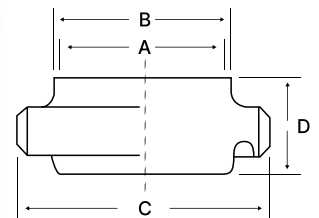
## RJT Hex Nuts

RJN104	1"	33.45	22.2	50.8	42.26
RJN154	1½"	46	22.2	65	54.96
RJN204	2"	58.67	22.2	79.4	67.92
RJN254	2½"	71.4	22.2	92	80.62
RJN304	3"	84.1	22.2	104.8	93.32
RJN404	4"	109.7	22.2	130	118.72



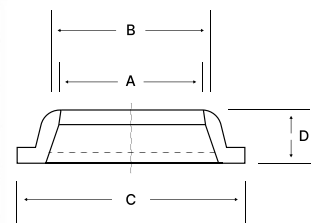
## RJT Weld Male

RJM106	1"	22.2	25.65	45.72	27
RJM156	1½"	34.9	39.35	58.42	27
RJM206	2"	47.6	51.08	72.72	27
RJM256	2½"	60.3	63.75	85.42	27
RJM306	3"	73	76.45	98.12	27
RJM406	4"	97.6	101.85	123.52	27



## RJT Weld Liners

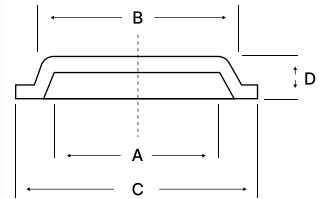
RJL106	1"	22.2	25.65	41.3	12.7
RJL156	1½"	34.9	38.35	54	12.7
RJL206	2"	47.6	51.05	66.7	12.7
RJL256	2½"	60.3	63.75	79.4	12.7
RJL306	3"	73	76.45	92.1	12.7
RJL406	4"	97.6	101.85	117.5	12.7



Product Code	Size	A	B	C	D
--------------	------	---	---	---	---

**RJT Plain Blank**

RJB106	1"	26.2	32.5	41.3	8.7
RJB156	1½"	38.8	45.2	54	8.7
RJB206	2"	51.5	58	66.7	8.7
RJB256	2½"	64.2	70.6	79.4	8.7
RJB306	3"	77	83.5	92.1	8.7
RJB406	4"	89.5	96	117.5	8.7



Nitrile	Black EPDM	Blue Met Det PTFE	Viton®	Silicone	Size	A	B
---------	------------	-------------------	--------	----------	------	---	---

**RJT Seal**

RJG10N	RJG10E	RJG10BMDE	RJG10P	RJG10V	-	1"	33.3	6.6
RJG15N	RJG15E	RJG15BMDE	RJG15P	RJG15V	-	1½"	46	6.6
RJG20N	RJG20E	RJG20BMDE	RJG20P	RJG20V	-	2"	58.7	6.6
RJG25N	RJG25E	RJG25BMDE	RJG25P	RJG25V	-	2½"	71.4	6.6
RJG30N	RJG30E	RJG30BMDE	RJG30P	RJG30V	RJG30S	3"	84.1	6.6
RJG40N	RJG40E	RJG40BMDE	RJG40P	RJG40V	-	4"	100.5	6.6

