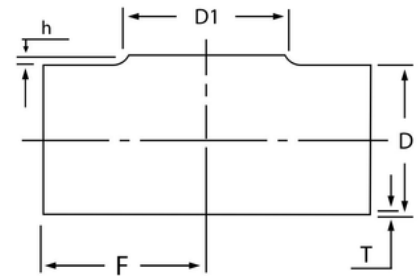


ISO STAINLESS STEEL PULLED TEE

ISO stainless steel pulled tees are used to form a branch in a piping system, to redirect the liquid flowing through the pipe.

ISO stainless steel pulled tees can either be equal or reducing. An equal ISO pulled tee has the same diameter as the main pipe it is connected to. In comparison, an ISO reducing tee features two outlets that cut at 90° to the main run pipe.



Typically, the ISO stainless steel pulled tees that Special Metric Materials supplies are manufactured to EN 10253-4/EN 10253-3. ISO stainless steel pulled tees manufactured to EN 10253-4 have a weld factor of $z=1$ & are rated to a higher pressure capability.

Special Metric Materials can supply ISO stainless steel pulled tees in the following Grades: 304L (1.4307), 316L (1.4404) & 316L High Moly (1.4432).

DN	D	D1	F	h	Thickness/Weight kg/pce		
					2	2.5	2.6
50	60,3	33,7	50	2	1,6/0,22	2,0/0,29	
		42,4		?	1,6/0,21		2,0/0,28
		48,3		3	1,6/0,21		2,0/0,28
		60,3		?	1,6/0,2		2,0/0,27
65	76,1	42,4	65	2	1,6/0,38	2,0/0,47	
		48,3		3	1,6/0,38	2,0/0,47	
		60,3		?	1,6/0,37	2,0/0,46	
		76,1		?	1,6/0,36	2,0/0,45	
80	88,9	48,3	80	3	1,6/0,52		2,0/0,68
		60,3		?	1,6/0,52		2,0/0,68
		76,1		4	1,6/0,51		2,0/0,67
		88,9		5	1,6/0,5		2,0/0,65
100	114,3	60,3	100	3	1,6/0,85		2,0/1,1
		76,1		4	1,6/0,84		2,0/1,09
		88,9		5	1,6/0,83		2,0/1,08
		114,3		7	1,6/0,81		2,0/1,05
		125		7	1,6/0,81		2,0/1,05
125	139,7	76,1	125	4	1,6/1,4		2,0/1,82
		88,9		5	1,6/1,39		2,0/1,81
		114,3		7	1,6/1,38		2,0/1,79
		139,7		8	1,6/1,51		2,0/1,74
150	168,3	88,9	150	5	1,6/1,63		2,0/2,12
		114,3		7	1,6/1,62		2,0/2,11
		139,7		8	1,6/1,59		2,0/2,07
		168,3		10	1,6/1,35		2,0/2,02
200	219,1	114,3	200	7	1,6/?		2,0/4,15
		139,7		8	1,6/?		2,0/4,11
		168,3		10	1,6/?		2,0/4,08
		219,1		12	1,6/?		2,0/3,94
250	273	139,7	250	8			2,0/6,47
		168,3		10			2,0/6,43
		219,1		12			2,0/6,33
		273		13			2,0/6,12



**Special Metric
Materials**

Special Metric Materials Ltd, Broadway, Globe Industrial Estate, Dukinfield, Cheshire, SK16 4UU, United Kingdom

+44 (0)161 343 7005

sales@specialmetricmaterials.com

Special Metric Materials Ltd is a company registered in England and Wales.
Company Number 13650650.

DN	D	D1	F	h	2	2.5	2.6	3
Thickness/Weight kg/pce								
300	323,9	168,3	300	10			2,0/9,23	2,5/10,65
		219,1		12			2,0/9,1	2,5/10,5
		273		13			2,0/8,97	2,5/10,35
		323,9		15			2,0/8,71	2,5/10,05
350	355,6	219,1	350	12				2,5/13,65
		273		13				2,5/13,42
		323,9		15				2,5/13,2
		355,6		17				2,5/12,98
400	406,4	273	400	13				2,5/18,98
		323,9		13				2,5/17,4
		355,6		15				2,5/17,32
		406,4		20				2,5/16,95